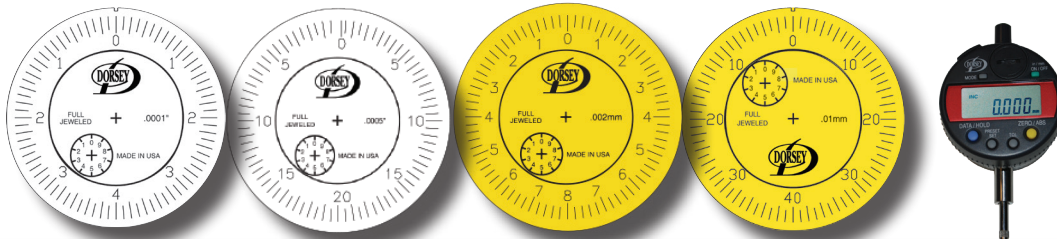


ORDERING INFORMATION					
PART #	DESCRIPTION	"T" CONFIGURATION		"Y" CONFIGURATION	
		ID RANGE	OD RANGE	ID RANGE	OD RANGE
BC1	Gaging Fixture with 3 contacts, 3 holders, and .0001" grad. indicator	.75" - 4.44"	.25" - 5.19"	.75" - 5.25"	.25" - 6.00"
BC1-NI	Same as above, less indicator	.75" - 4.44"	.25" - 5.19"	.75" - 5.25"	.25" - 6.00"
BC2	Gaging Fixture with 3 contacts, 3 holders, and .0001" grad. indicator	2" - 8.44"	1.5" - 9.19"	2" - 10.00"	1.5" - 10.88"
BC2-NI	Same as above, less indicator	.75" - 4.44"	1.5" - 9.19"	2" - 10.00"	1.5" - 10.88"

## 4:5 RATIO INDICATORS FOR RECOMMENDED USE WITH 3 POINT "Y" CONFIGURATION

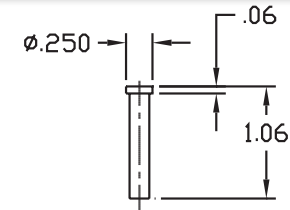
Example: .010 spindle travel is displayed as .008" on indicator



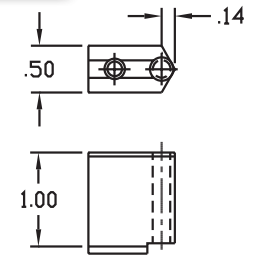
MODEL	2DMR025-01Z	2DMR125-05	2DMR005-002mm	2DMR5-01mm	MT543-312B
Graduation	.0001"	.0005"	0.002mm	0.01mm	Selectable
Total Travel	.020"	.100"	0.4mm	4.0mm	.500"/12mm
Revolutions	2.5 Rev.	2.5 Rev.	2.5 Rev.	5 Rev.	N/A
Travel/Rev.	.008"	.040"	0.16mm	0.8mm	N/A



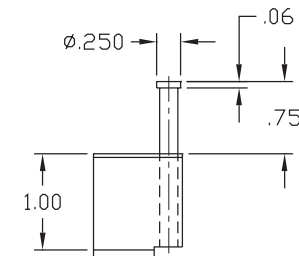
Dorsey Products - proudly made in the USA



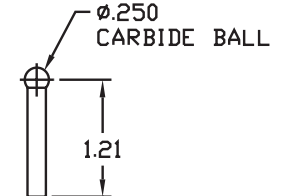
**Part #BCC-GS25**  
Steel groove contact



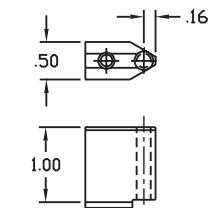
**Part #2760-S (Steel)**  
**Part #2760-C (Carbide)**  
Contact holder, sharp  
(1 required)



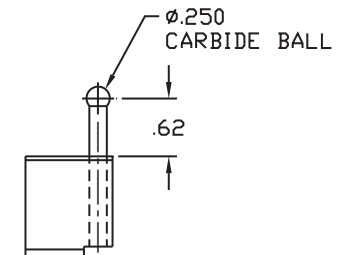
**Part #BCC-GS25**  
Shown in contact  
holder part #2760



**Part #BCC-CB25**  
Carbide ball contact



**Part #2759-S (Steel)**  
**Part #2759-C (Carbide)**  
Contact holder, flat  
(2 required)



**Part #BCC-CB25**  
Shown in contact  
holder part #2760