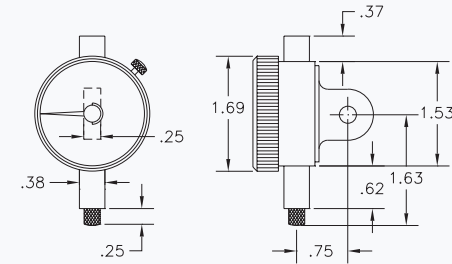
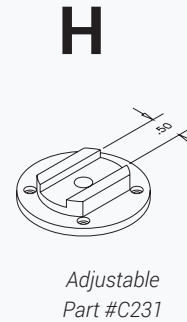
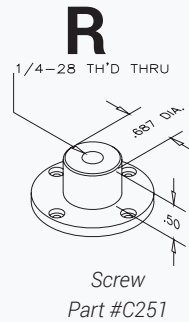
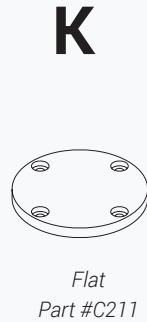
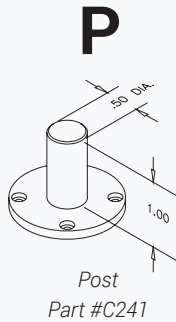
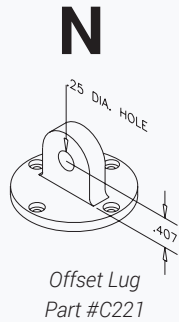
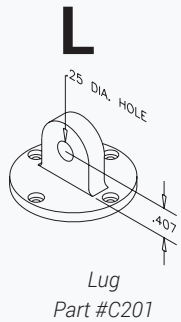


BACK OPTIONS FOR GROUP 1-CONTINUED



The letter designating the indicator back follows the letter designating the dial format.

Example #1: 2I50-01B

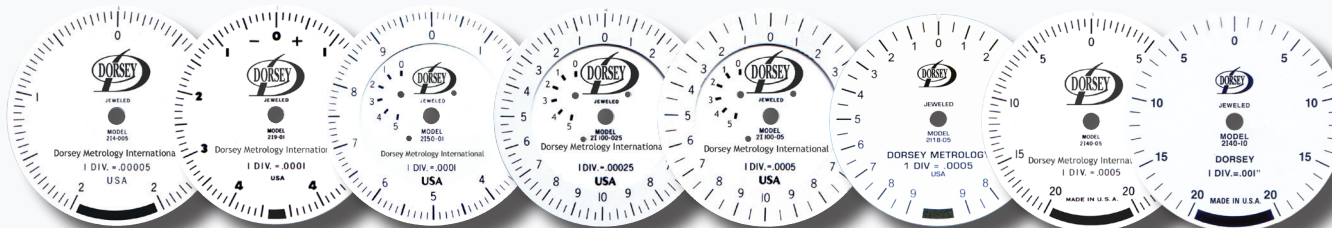
H

Example #2: 2DM100-01B

H

HIGH AMPLIFICATION FEATURES

- ✓ Shock proof fully jeweled Dorsey high amplification movement.
- ✓ Cartridge style movement assembly is easily replaced to limit gage downtime.
- ✓ Heavy duty aluminum housing.
- ✓ Directly interchangeable with Standard Gage® Brown and Sharp bore gaging products.
- ✓ All resolutions feature .125" spindle travel.



Model	DS-214-005	DS-219-01	DS-2150-01	DS-21100-025	DS-21100-05	DS-2118-05	DS-2140-05	DS-2140-10
Graduation	.00005"	.0001"	.0001"	.00025"	.0005"	.0005"	.0005"	.001"
Total Travel	.004"	.009"	.050"	.100"	.100"	.018"	.040"	.002"
Dial	.002"-0-.002"	.0045"-0-.0045"	0-.005"-0	0-.10"-0	0-.10"-0	.009"-0-.009"	.020"-0-.020"	.002"-0-.002"
Revolutions	1 Rev.	1 Rev.	3 Rev.	3 Rev.	3 Rev.	1 Rev.	1 Rev.	1 Rev.
Accuracy	+/- 0.00005"	+/- 0.0001"	+/- 0.0001"	+/- 0.00025"	+/- 0.0005"	+/- .0005"	+/- 0.0005"	+/- 0.001"
Repeatability	+/- 0.00001"	+/- 0.00002"	+/- 0.00002"	+/- 0.00005"	+/- 0.0001"	+/- .0001"	+/- 0.0001"	+/- 0.0005"