

DYS GROOVE GAGE

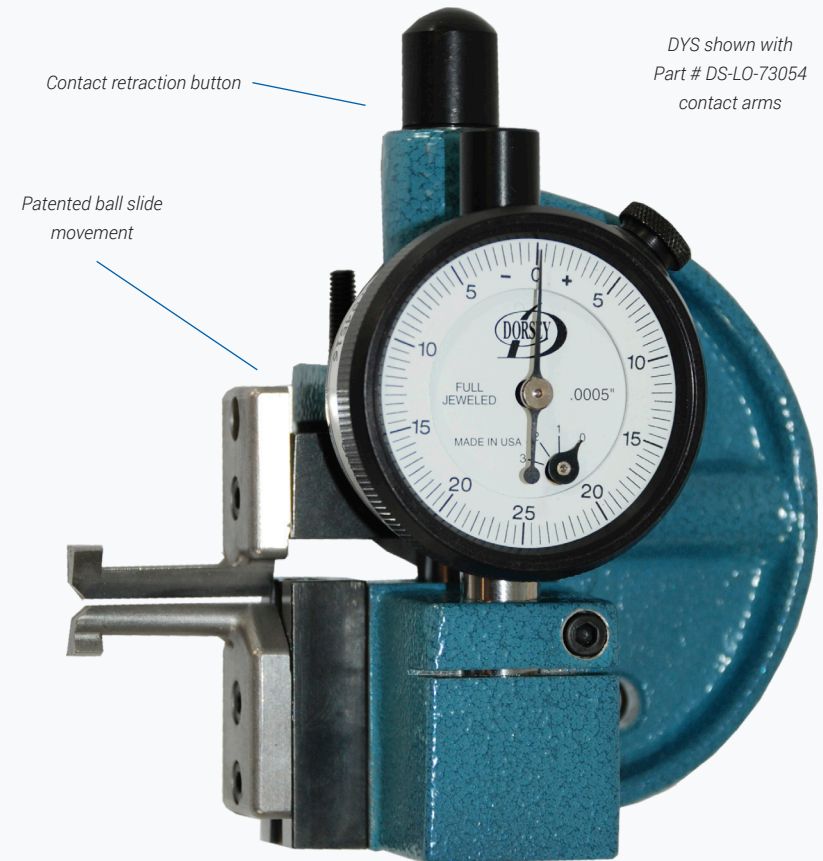
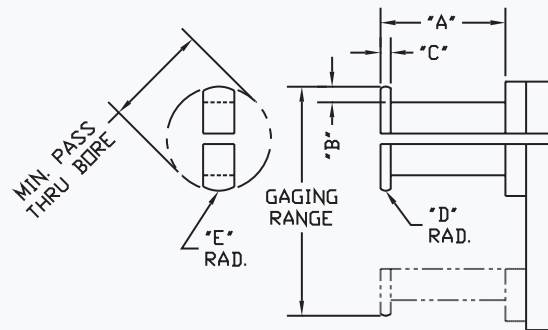
Dorsey's Dynamike Model DYS groove gage combines a lightweight, compact, rigid cast frame and a patented ball bushing slide with a series of interchangeable gaging arms to suit virtually any application.

FEATURES:

- ✓ .25" (6mm) of gaging travel / retraction.
- ✓ .25" to .75" (6mm-19mm) diameter range.
- ✓ 1.25" (32mm) long precision ground adjustment rail.
- ✓ Can accommodate dial or digital indicator.
- ✓ Retraction pulls away from indicator.



Gage shown is DYS with special metric indicator, part# 2305 arms, and part # 18967 bench stand



DYS shown with Part # DS-LO-73054 contact arms

Shown actual size

The DYS Groove Gage is supplied per model # below with DYS Groove Gage body, model # 1DM125-05 dial indicator, .0005" graduation, and the appropriate contact arm set for the range noted below:

| PART # | RANGE | MIN / BORE | TYPE | "A" Dim. | "B" Dim. | "C" Dim. | CONTACT ARM # |
|------------|-------------|------------|---------|----------|----------|----------|----------------|
| DYS-250-2 | .250 - .500 | .187 | 2 Point | .500 | .030 | .030 | # 2305-2 |
| DYS-250-3 | .250 - .500 | .187 | 3 Point | .500 | .030 | .030 | # 2305-3 |
| DYS-500-2 | .500 - .750 | .350 | 2 Point | 1.000 | .075 | .060 | # 2306-2 |
| DYS-500-3 | .500 - .750 | .350 | 3 Point | 1.000 | .075 | .060 | #2306-3 |
| DYS-Blank* | To Suit | .370 | 2 Point | .750 | .097 | .125 | # DS-LO-73054* |

| PART # | DESCRIPTION |
|------------|---|
| DYS-FRAME | DYS Groove Gage body only, less gaging arms and indicator |
| 18967 | For the Bench Stand used with the DYS gages |
| 2335 | Clamp nut used with part # 2305 & #2306 contact arms |
| DS-LO-2335 | Clamp nut used with part # DS-LO-73054 |

*Note #1: Blank contacts can be used as supplied or modified to suit a specific application.

*Note #2: For pricing on special gaging arms to suit a specific application, submit the part print with your quotation. Arms can be ordered separately.