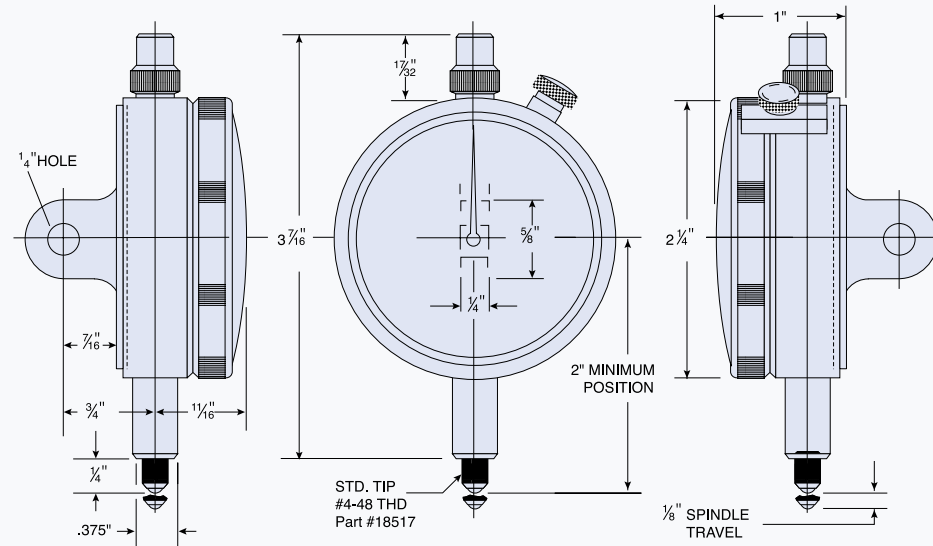


# GROUP 2 ULTRA HIGH AMPLIFICATION

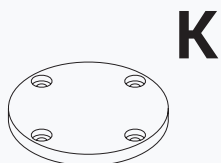
All Dorsey Ultra High Amplification Indicators utilize the lever principle of motion. They do not rely on rack and pinion motion. This eliminates the inherent error between the meshing of racks and gears.

## FEATURES:

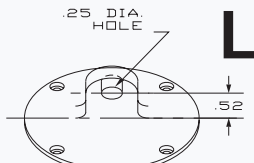
- ✓ Available with ISO 17025 certification.
- ✓ High amplification movement - graduations as low as .00005". Improves readability and minimizes judgement error.
- ✓ Lever principle of amplification - minimizes effect of spindle sideshake. Linearity and repeatability maintained through millions of cycles.
- ✓ 2.25" Bezel - fits many existing fixtures. Conforms to ANSI/AGD standards.
- ✓ Low gaging force - standard is 3 oz. Available at higher or lower values with factory adjustment.
- ✓ Chrome plated hardened steel stem is designed for clamping. It is virtually crush proof.
- ✓ Bezel zero adjustment - ensures positive lock.
- ✓ Straight through spindle - permits installation of top mounted accessories and options.
- ✓ Optional lifting lever positions - can be attached to top bushing or stem.
- ✓ Optional tolerance hands or shaded dials to facilitate production gaging.



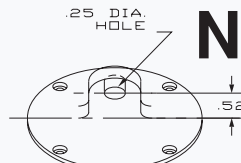
Indicator back options for Ultra High Amplification Group 2



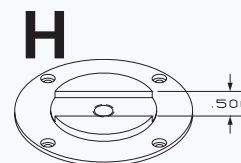
Flat  
Part# 49262



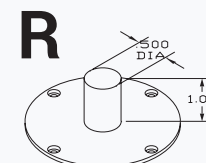
Lugback  
Part# 49261



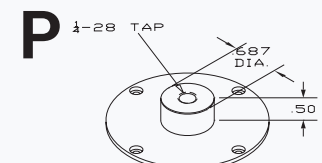
Offset Lugback  
Part# 49260



Slideback  
Part# 49259



Screwback  
Part# 49230



Postback  
Part# 49289

See page 14 for dial face options, page 15 for accessories and contacts