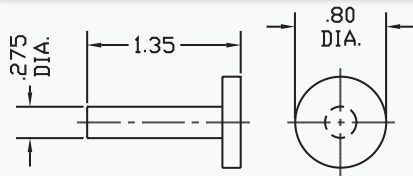


FEATURES:

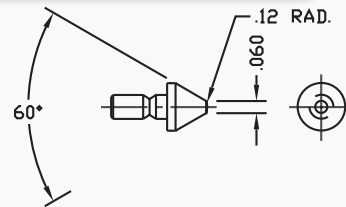
- ✓ Checks multiple shapes. A combination of contact points, backstops, and accessories may be selected and custom assembled to meet the most exacting needs.
- ✓ Comparative measurements can be made of almost any shape: diameters, spheres, grooves, shafts, flats, etc.
- ✓ Specifically designed for Dorsey's high amplification dial indicators with graduations as fine as .00002" (0.0005mm).
- ✓ Two frame sizes are available.
- ✓ Hand held or mounted on an optional bench stand.
- ✓ Utilizes dial and digital indicators as well as electronic transducers. Display on electronic columns or remote digital devices. SPC compatible.
- ✓ Tailstock fine adjustment of 1" maintains contact parallelism throughout the gaging range.
- ✓ Standard thumb actuated retraction of .100" makes part loading easy.
- ✓ Contacts suitable for most applications can be supplied from a wide variety in stock. All anvils utilize shank-lock design for maximum holding pressure.
- ✓ Several backstop designs are available to accommodate a variety of part configurations.

ORDERING INFORMATION	
PART #	DESCRIPTION
48554	0 - 1" range versatile snap gage with choice of one set of contacts
48555	1 - 2" range versatile snap gage with choice of one set of contacts
48502-V	Bench Stand for versatile snap gage



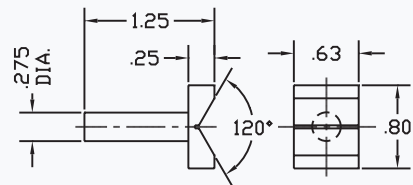
Part #48531

Standard with Gage Flat round backstop



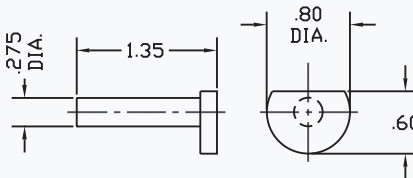
Part #48547-C

Taper Radius



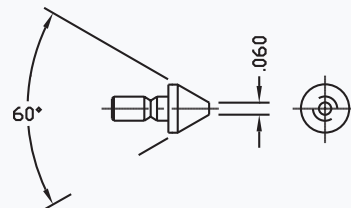
Part #48532

"V" block backstop



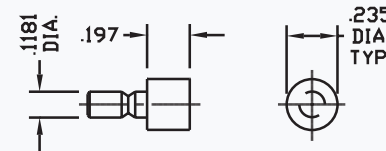
Part #48530

Semi round backstop



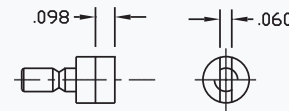
Part #48548-C

Taper Flat



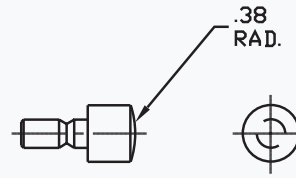
Part #48544-C

Round (.235")



Part #48545-C

Rail (.235")



Part #48546-C

Large Spherical

Part #48554 shown with dial indicator (part #414-002) and bench stand (part #48502-V). Indicator sold separately.

